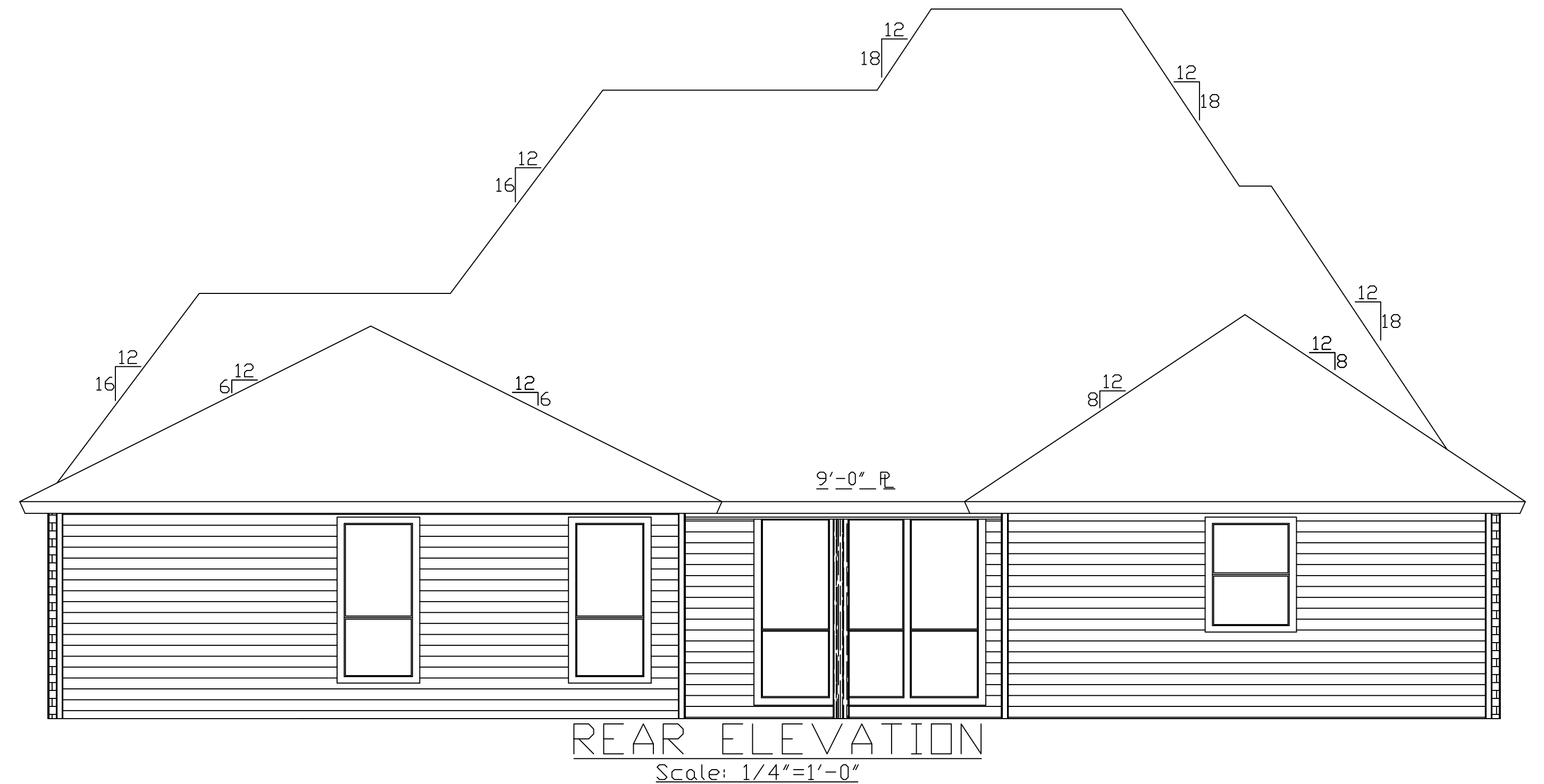
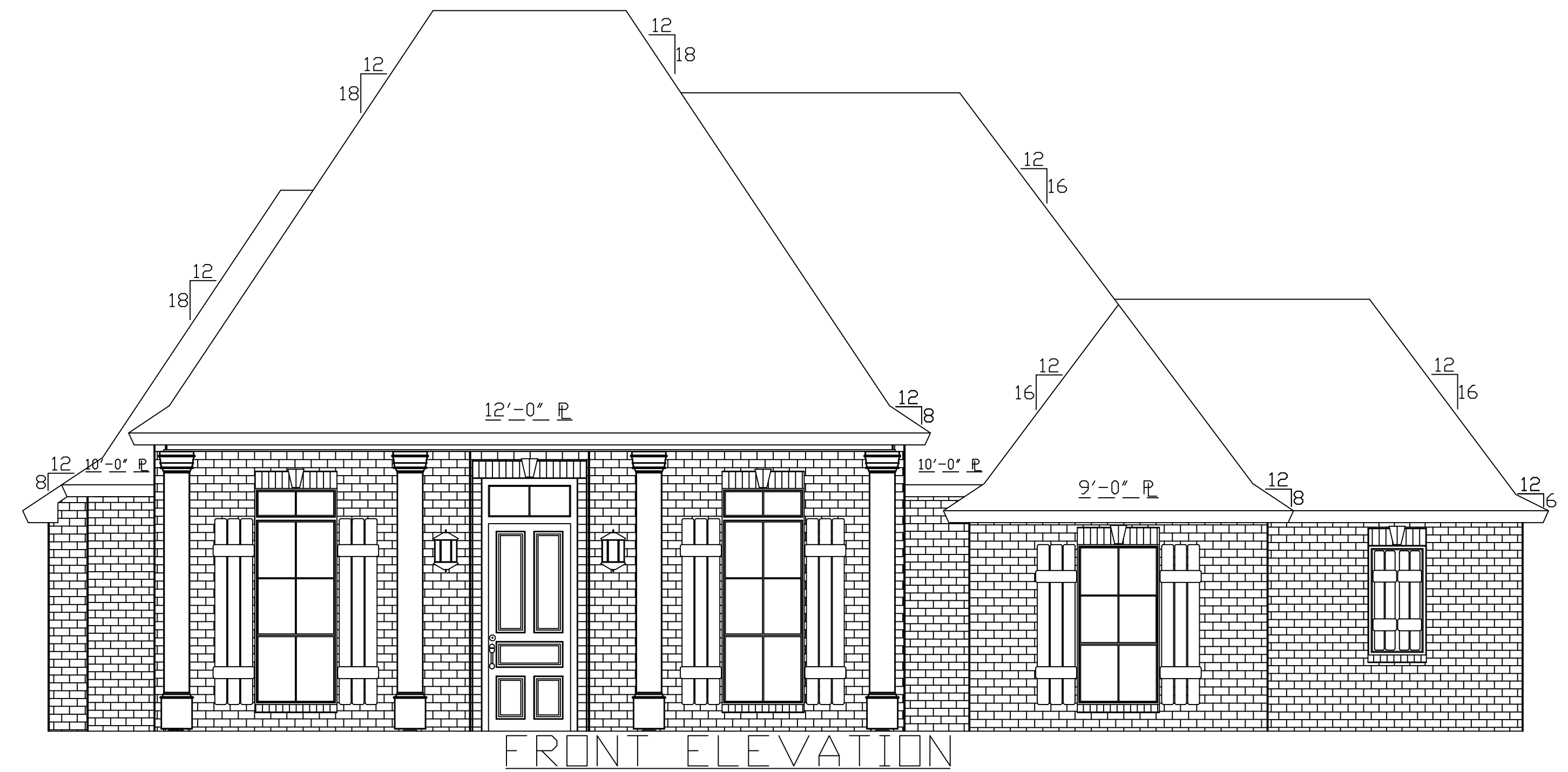
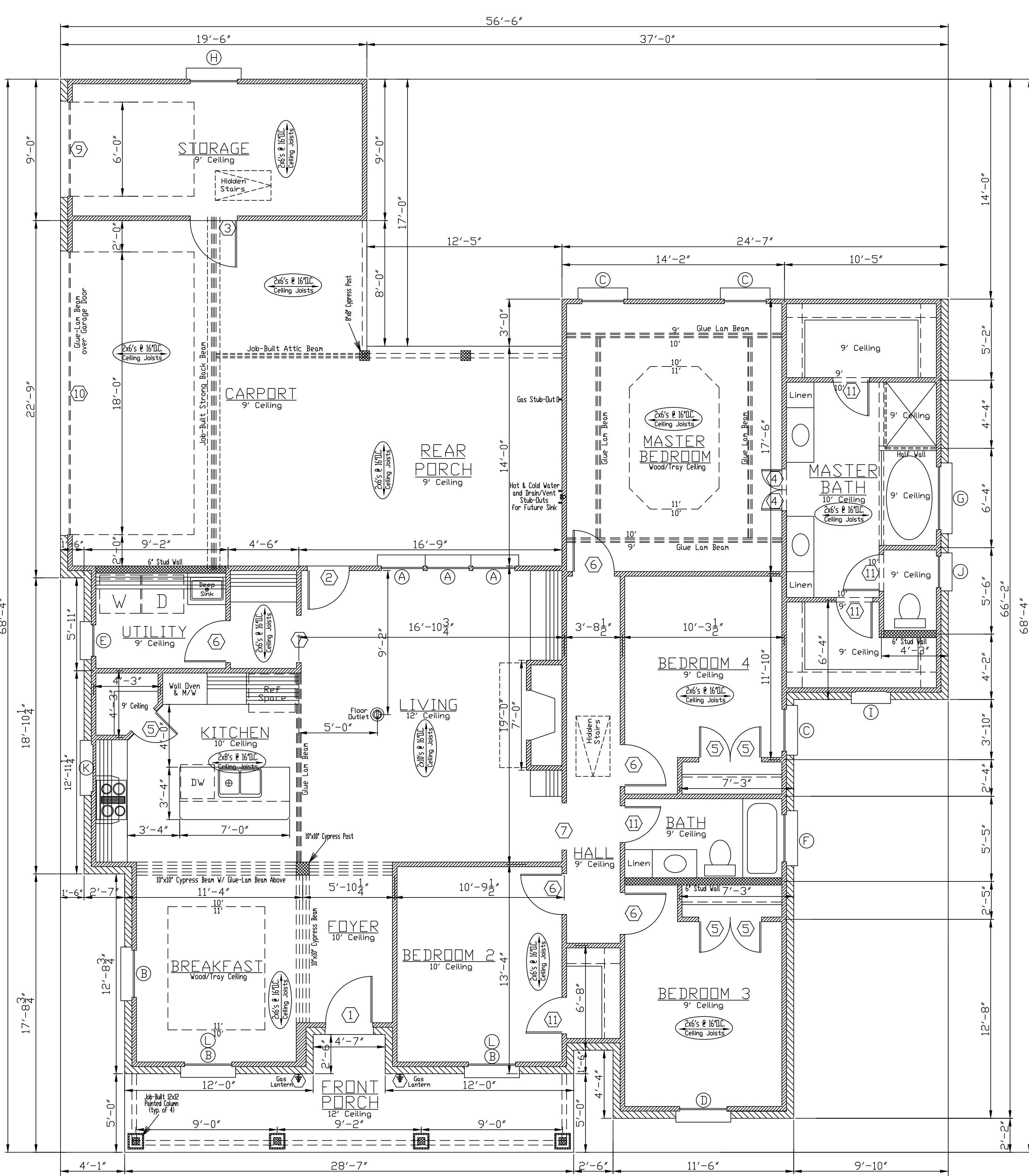


OPENING SCHEDULE

DOORS				WINDOWS			
MARK	SIZE	THK	DESCRIPTION	MARK	SIZE	LTS	DESCRIPTION
(1)	3-2 x 8-0	1 3/4	5 PANEL SPANISH CEDAR W/ TRANSOM	(A)	2-8 x 7-0	1/1	SINGLE HUNG, ALMOND, VINYL
(2)	2-8 x 8-0	1 3/4	EXT. FIBERGLASS, FULL LT	(B)	3-0 x 7-0	4/2	SINGLE HUNG, ALMOND, VINYL
(3)	3-0 x 6-8	1 3/4	EXT. FIBERGLASS, RAISED PANEL	(C)	2-8 x 6-0	1/1	SINGLE HUNG, ALMOND, VINYL
(4)	1-4 x 6-8	1 3/8	INT., H.C., RAISED PANEL MASONITE	(D)	3-0 x 6-0	4/2	SINGLE HUNG, ALMOND, VINYL
(5)	2-0 x 6-8	1 3/8	INT., H.C., RAISED PANEL MASONITE	(E)	2-0 x 3-6	2/2	SINGLE HUNG, ALMOND, VINYL
(6)	2-8 x 6-8	1 3/8	INT., H.C., RAISED PANEL MASONITE	(F)	3-0 x 1-0	1	FIXED, ALMOND, VINYL, RAIN GLASS
(7)	3-0 x 8-0	Std.	CASED OPENING	(G)	4-0 x 4-0	1	FIXED, ALMOND, VINYL, RAIN GLASS
(8)	2-8 x 6-8	Std.	CASED OPENING	(H)	3-0 x 4-0	1/1	SINGLE HUNG, ALMOND, VINYL
(9)	6-0 x 8-0	Std.	METAL GARAGE DOOR, MANUAL	(I)	2-0 x 4-0		FIXED, DEAD BOARD SHUTTERS
(10)	18-0 x 8-0	Std.	METAL GARAGE DOOR, ELECTRIC	(J)	2-0 x 3-0	1/1	SINGLE HUNG, ALMOND, VINYL
(11)	2-4 x 6-8	1 3/8	INT., H.C., RAISED PANEL MASONITE	(K)	3-0 x 7-0		FIXED, DEAD BOARD SHUTTERS
				(L)	3-0 x 1-0	2	FIXED, ALMOND, VINYL



FLOOR PLAN
Scale: 1/4"=1'-0"



DO NOT REPRODUCE THIS PLAN
Construction By:
CORBIN LADNER CUSTOM HOMES
Subdivision: **Hidden Cove**
Lot: **15**
City/Parish: **Ascension**
THIS PLAN INTENDED FOR USE ON THE ABOVE LISTED LOT ONLY

SQUARE FOOTAGE	
LIVING AREA	1946
FRONT PORCH	154
REAR PORCH	174
CARPORY	430
STORAGE	176
TOTAL	2880

- GENERAL NOTES:**
1. THIS HOME DESIGN IS THE PROPERTY OF HOME DESIGNS OF BATON ROUGE. ANY REUSE OR REPRODUCTION OF THIS PLAN IS PROHIBITED.
 2. CONTRACTOR IS RESPONSIBLE FOR VERIFICATION OF ALL DIMENSIONS PRIOR TO CONSTRUCTION.
 3. FIREPLACE SIZE AND DESIGN SHALL BE BY CONTRACTOR AT TIME OF CONSTRUCTION.
 4. ALL ANGLED WALLS ARE AT 45 DEGREES UNLESS OTHERWISE NOTED.
 5. SEE SHEET 2/5 FOR ROOF CUT AND SIDE ELEVATIONS.
 6. SEE SHEET 3/5 FOR H.V.A.C. PLAN AND ELECTRICAL PLAN.
 7. SEE SHEET 4/5 FOR FOUNDATION PLAN.
 8. SEE SHEET 5/5 FOR TYPICAL CONSTRUCTION DETAILS.
 9. SEE ATTACHMENTS FOR PLOT PLAN AND RESCHECK.

SPECIAL NOTES:

1. HOME DESIGNS OF BATON ROUGE HAS MADE EVERY EFFORT TO INSURE THE ACCURACY OF THIS PLAN. HOWEVER, IT IS THE RESPONSIBILITY OF THE CONTRACTOR/OWNER TO VERIFY THE DIMENSIONAL CORRECTNESS, STRUCTURAL INTEGRITY AND CODE COMPLIANCE ASPECTS OF THIS PLAN PRIOR TO CONSTRUCTION. ANY LIABILITIES DUE TO ERRORS OR OMISSIONS ON THIS PLAN ARE TO BE ASSUMED BY THE CONTRACTOR/OWNER.
2. HOME DESIGNS OF BATON ROUGE HAS THOROUGHLY ENJOYED WORKING WITH YOU. WE SINCELY APPRECIATE YOUR BUSINESS AND LOOK FORWARD TO WORKING WITH YOU AGAIN SOON.

ANOTHER DESIGN BY
HOME DESIGNS OF BATON ROUGE
DAVID F. BARBER, OWNER
5711 GREENSHIRE AVE.
BATON ROUGE, LA 70804
11/21/16
PAGE 1/5