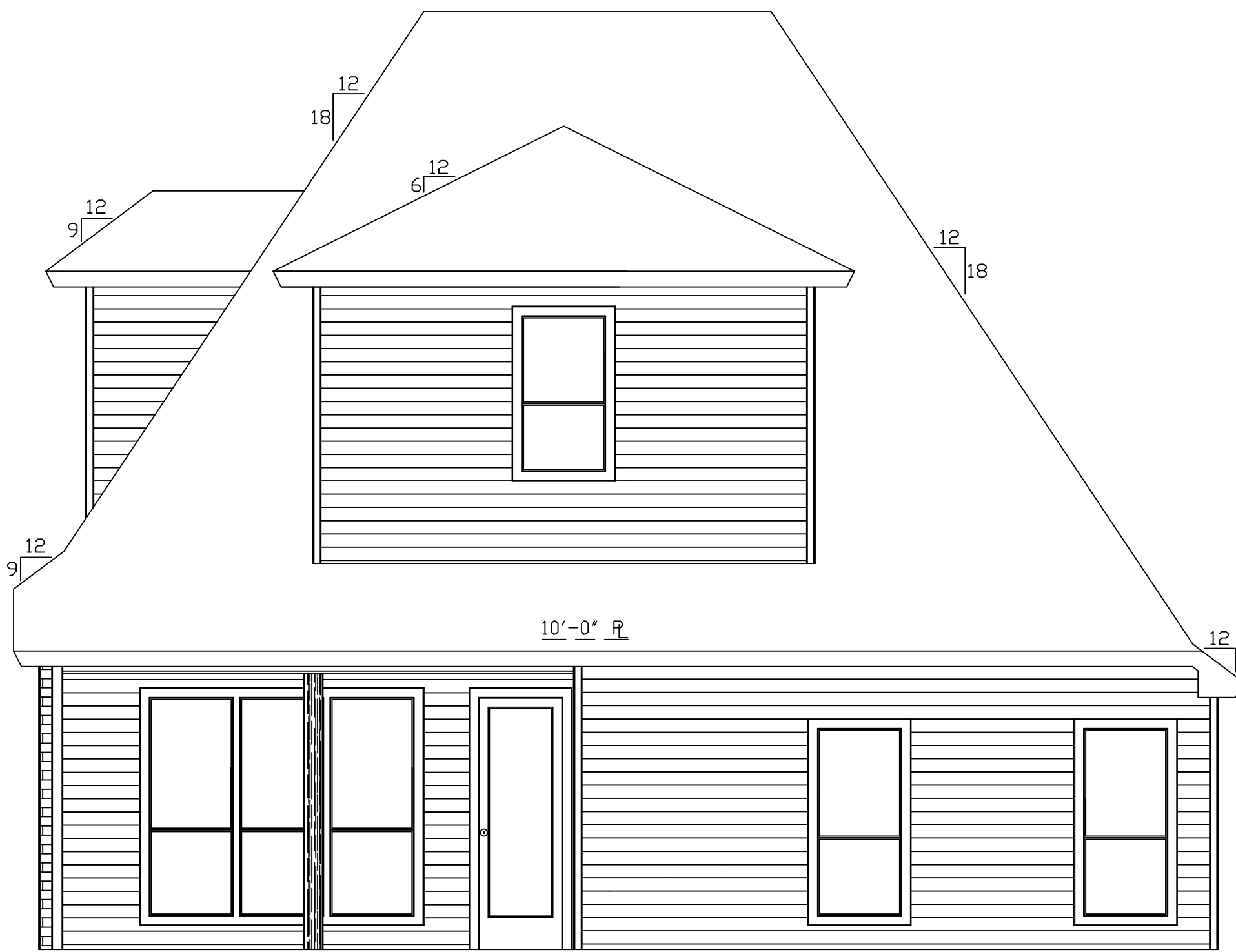
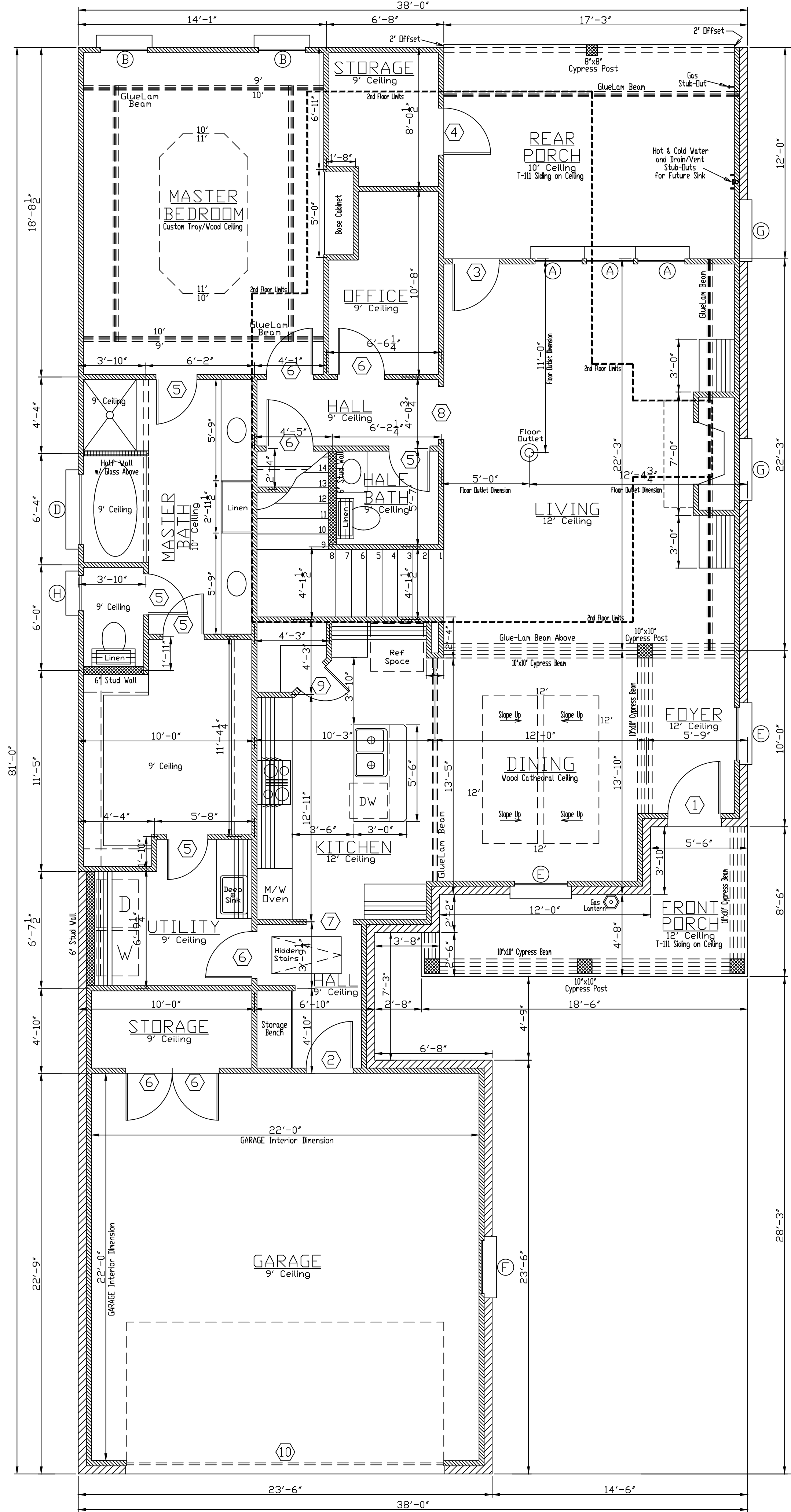


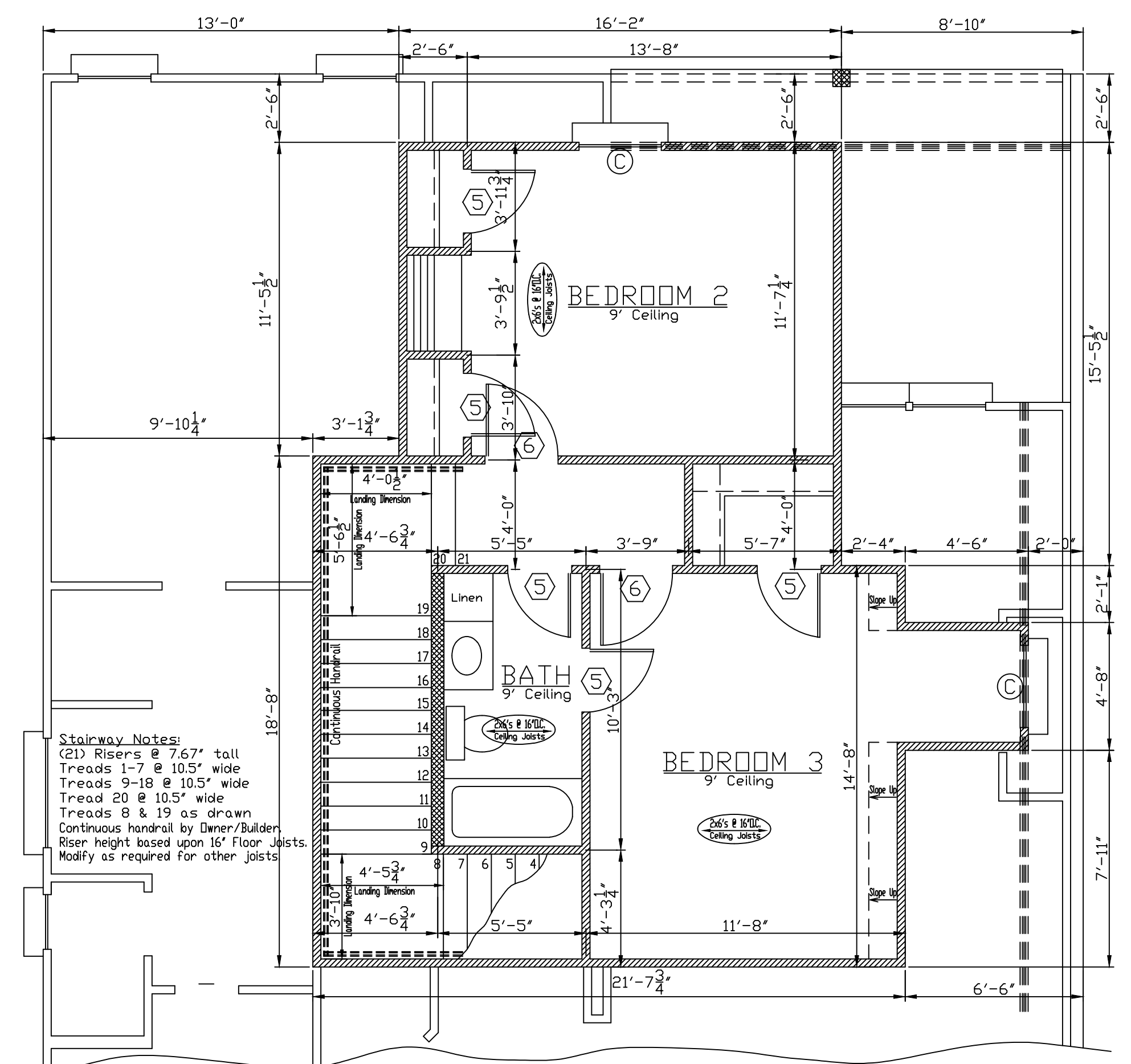
FRONT ELEVATION
Scale: 1/4"=1'-0"



REAR ELEVATION
Scale: 1/4"=1'-0"



1st FLOOR PLAN
Scale: 1/4"=1'-0"



2nd FLOOR PLAN
Scale: 1/4"=1'-0"

SQUARE FOOTAGE	
1st FLOOR LIVING	1682
2nd FLOOR LIVING	494
TOTAL LIVING AREA	2176
FRONT PORCH	105
REAR PORCH	207
GARAGE	540
STORAGE	97
TOTAL	3125

DO NOT REPRODUCE THIS PLAN
Construction By:
CORBIN LADNER CUSTOM HOMES, LLC
Location: 23
Dutchtown Meadows
Parish: Ascension
THIS PLAN INTENDED FOR USE ON THE ABOVE LISTED LOT ONLY

OPENING SCHEDULE									
DOORS					WINDOWS				
MARK	SIZE	THK	DESCRIPTION	MARK	SIZE	LTS	DESCRIPTION	MARK	SIZE
(1)	3-2 x 8-0	1 3/4	EXT, SPANISH CEDAR, 5 PANEL W/ 3 LITE TRANSOM ABOVE	(A)	2-8 x 7-0	1/1	SINGLE HUNG, ALMOND, VINYL	(A)	2-8 x 7-0
(2)	2-8 x 6-8	1 3/4	EXT, S.C. MASONITE, RAISED PANEL	(B)	2-8 x 6-0	1/1	SINGLE HUNG, ALMOND, VINYL	(B)	2-8 x 6-0
(3)	2-8 x 8-0	1 3/4	EXT., FIBERGLASS, FULL GLASS	(C)	3-0 x 5-0	1/1	SINGLE HUNG, ALMOND, VINYL	(C)	3-0 x 5-0
(4)	2-8 x 6-8	1 3/4	EXT., FIBERGLASS, RAISED PANEL	(D)	4-0 x 4-0	1	FIXED, ALMOND, VINYL, RAIN GLASS	(D)	4-0 x 4-0
(5)	2-4 x 6-8	1 3/8	INT., H.C., RAISED PANEL MASONITE	(E)	3-0 x 7-0	4/2	SINGLE HUNG, ALMOND, VINYL	(E)	3-0 x 7-0
(6)	2-8 x 6-8	1 3/8	INT., H.C., RAISED PANEL MASONITE	(F)	3-0 x 6-0		FIXED, DEAD BOARD SHUTTERS	(F)	3-0 x 6-0
(7)	2-8 x 8-0	Std.	CASED OPENING	(G)	3-0 x 7-0		FIXED, DEAD BOARD SHUTTERS	(G)	3-0 x 7-0
(8)	3-0 x 8-0	Std.	CASED OPENING	(H)	2-0 x 3-0	1/1	SINGLE HUNG, ALMOND, VINYL	(H)	2-0 x 3-0
(9)	2-0 x 8-0	1 3/8	INT., H.C., RAISED PANEL MASONITE						
(10)	18-0 x 8-0	Std.	D.H. GARAGE DOOR, ELECTRIC						

- GENERAL NOTES:**
- THIS HOME DESIGN IS THE PROPERTY OF HOME DESIGNS OF BATON ROUGE. ANY REUSE OR REPRODUCTION OF THIS PLAN IS PROHIBITED.
 - CONTRACTOR IS RESPONSIBLE FOR VERIFICATION OF ALL DIMENSIONS PRIOR TO CONSTRUCTION.
 - FIREPLACE SIZE AND DESIGN SHALL BE BY CONTRACTOR AT TIME OF CONSTRUCTION.
 - ALL ANGLED WALLS ARE AT 45 DEGREES UNLESS OTHERWISE NOTED.
 - SEE SHEET 2/5 FOR SIDE ELEVATIONS AND FOUNDATION PLAN.
 - SEE SHEET 3/5 FOR ELECTRICAL PLAN AND H.V.A.C PLAN.
 - SEE SHEET 4/5 FOR 2-STORY CONSTRUCTION DETAILS AND ROOF CUT PLAN.
 - SEE SHEET 5/5 FOR TYPICAL CONSTRUCTION DETAILS.
 - SEE ATTACHMENTS FOR PLOT PLAN AND RES-CHECK.

SPECIAL NOTES:

- HOME DESIGNS OF BATON ROUGE HAS MADE EVERY EFFORT TO INSURE THE ACCURACY OF THIS PLAN. HOWEVER, IT IS THE RESPONSIBILITY OF THE CONTRACTOR/OWNER TO VERIFY THE DIMENSIONAL CORRECTNESS, STRUCTURAL INTEGRITY AND CODE COMPLIANCE ASPECTS OF THIS PLAN PRIOR TO CONSTRUCTION. ANY LIABILITIES DUE TO ERRORS OR OMISSIONS ON THIS PLAN ARE TO BE ASSUMED BY THE CONTRACTOR/OWNER.
- HOME DESIGNS OF BATON ROUGE HAS THOROUGHLY ENJOYED WORKING WITH YOU. WE SINCELY APPRECIATE YOUR BUSINESS AND LOOK FORWARD TO WORKING WITH YOU AGAIN SOON.

ANOTHER DESIGN BY
HOME DESIGNS
BATON ROUGE
DAVID F. BARBER, OWNER
5711 GREENSHIRE AVE.
BATON ROUGE, LA 70804
(225) 851-9264
DRAWINGS: PFW/ML
7/27/16
PAGE 1/5