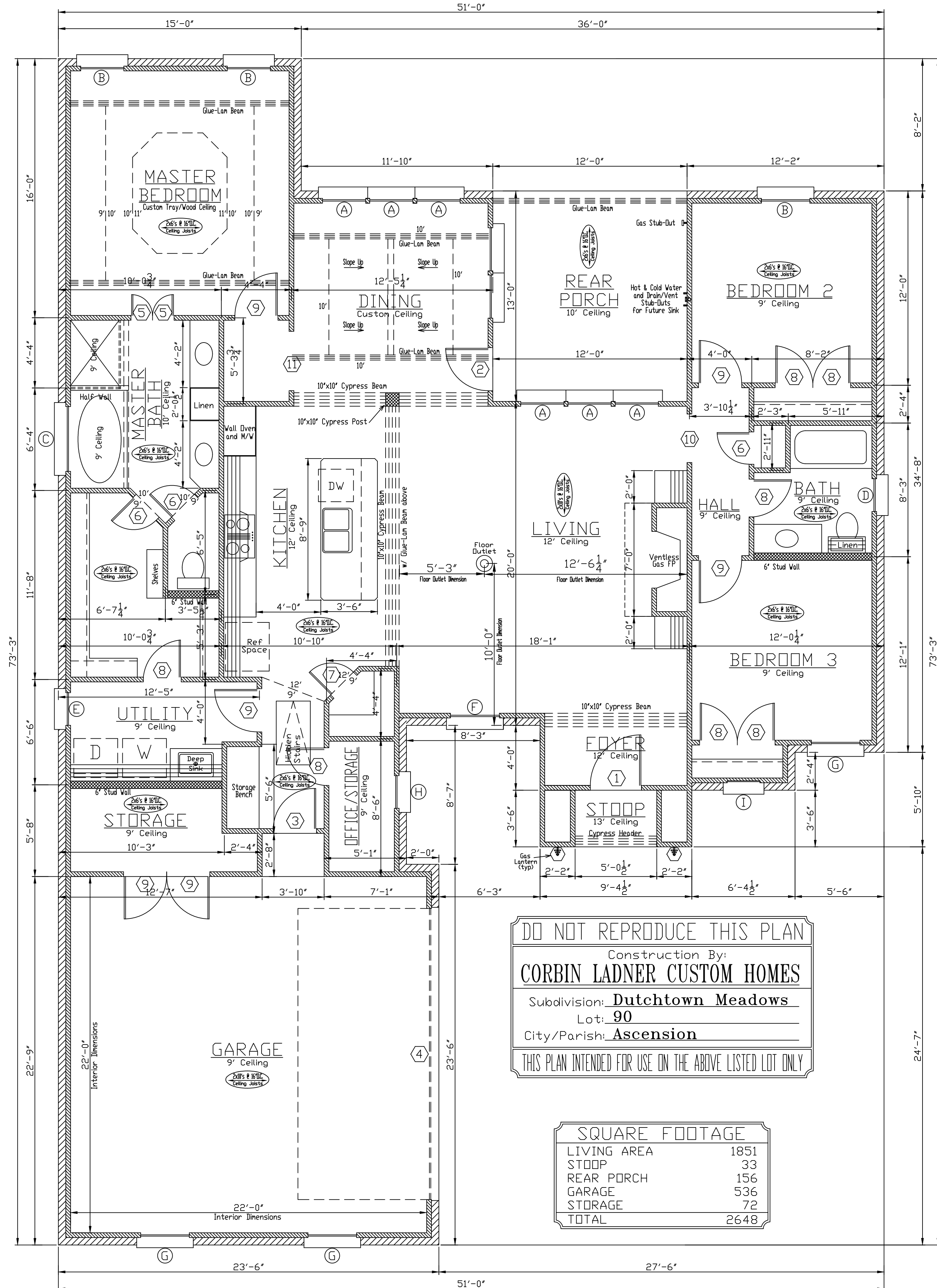


OPENING SCHEDULE										
DOORS					WINDOWS					
MARK	SIZE	THK	DESCRIPTION	MARK	SIZE	LTS	DESCRIPTION			
(1)	3-2 x 9-6	1 3/4	8' WOOD DOOR W/ 2 PANELS & 6 LITES W/ 15' TRANSOM	(A)	2-8 x 7-0	1/1	SINGLE HUNG, ALMOND, VINYL CLAD			
(2)	2-8 x 8-0	1 3/4	EXT., S.C., FIBERGLASS, FULL LITE	(B)	2-8 x 6-0	1/1	SINGLE HUNG, ALMOND, VINYL CLAD			
(3)	2-8 x 6-8	1 3/4	EXT., S.C., MASONITE, RAISED PANEL	(C)	4-0 x 4-0	1	FIXED, ALMOND, VINYL CLAD, RAIN GLASS			
(4)	18-0 x 8-0	Std.	D.H. GARAGE DOOR, ELECTRIC	(D)	2-0 x 4-0	1/1	SINGLE HUNG, ALMOND, VINYL CLAD			
(5)	1-4 x 6-8	1 3/8	INT., H.C., RAISED PANEL MASONITE	(E)	2-0 x 3-0	1/1	SINGLE HUNG, ALMOND, VINYL CLAD			
(6)	2-0 x 6-8	1 3/8	INT., H.C., RAISED PANEL MASONITE	(F)	3-0 x 7-0	4/2	SINGLE HUNG, ALMOND, VINYL CLAD			
(7)	2-0 x 8-0	1 3/8	INT., H.C., RAISED PANEL MASONITE	(G)	3-0 x 6-0	4/2	SINGLE HUNG, ALMOND, VINYL CLAD			
(8)	2-4 x 6-8	1 3/8	INT., H.C., RAISED PANEL MASONITE	(H)	2-0 x 6-0	4/2	SINGLE HUNG, ALMOND, VINYL CLAD			
(9)	2-8 x 6-8	1 3/8	INT., H.C., RAISED PANEL MASONITE	(I)	2-0 x 6-0		DEAD BOARD SHUTTERS			
(10)	3-0 x 8-0	Std.	CASED OPENING							
(11)	3-8 x 8-0	Std.	CASED OPENING							

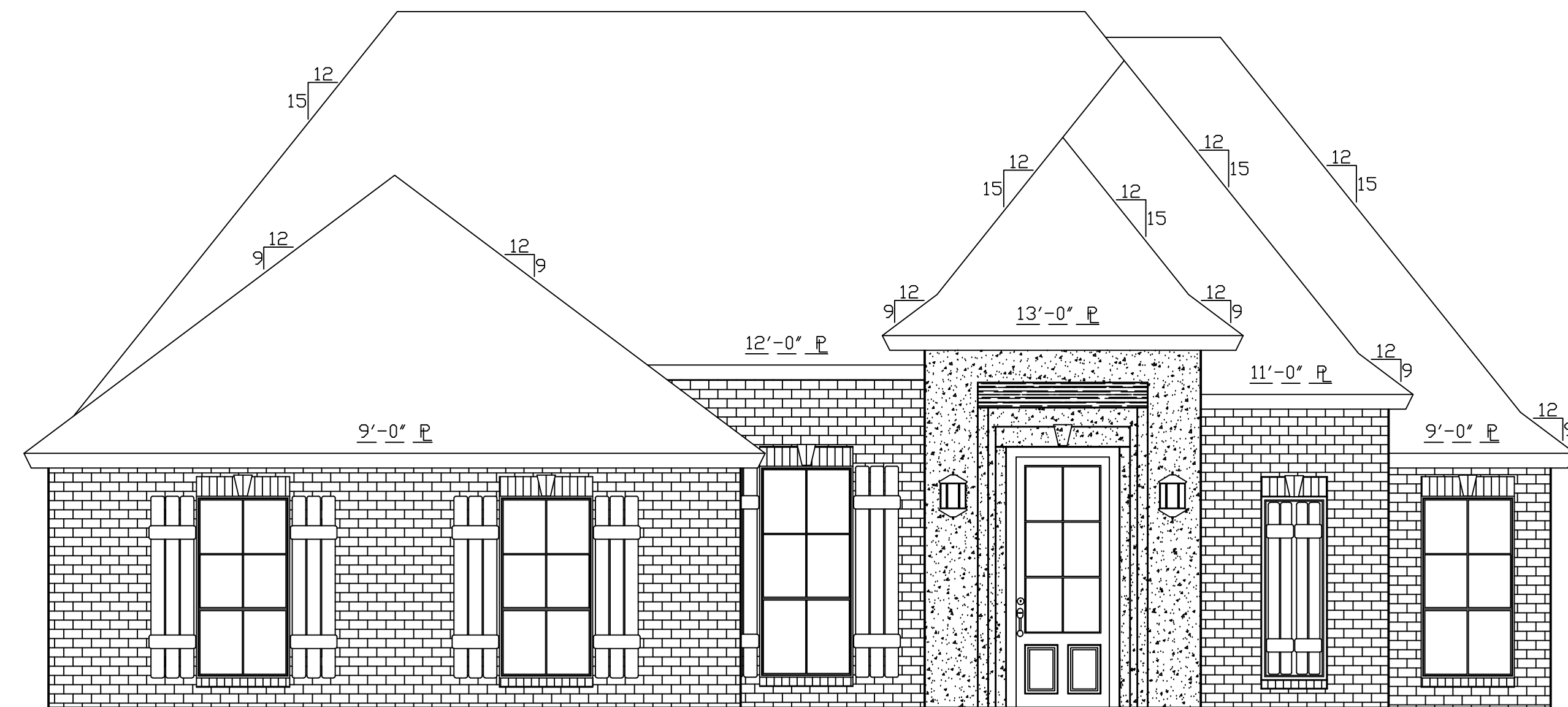
FLOOR PLAN

Scale: 1/4"=1'-0"

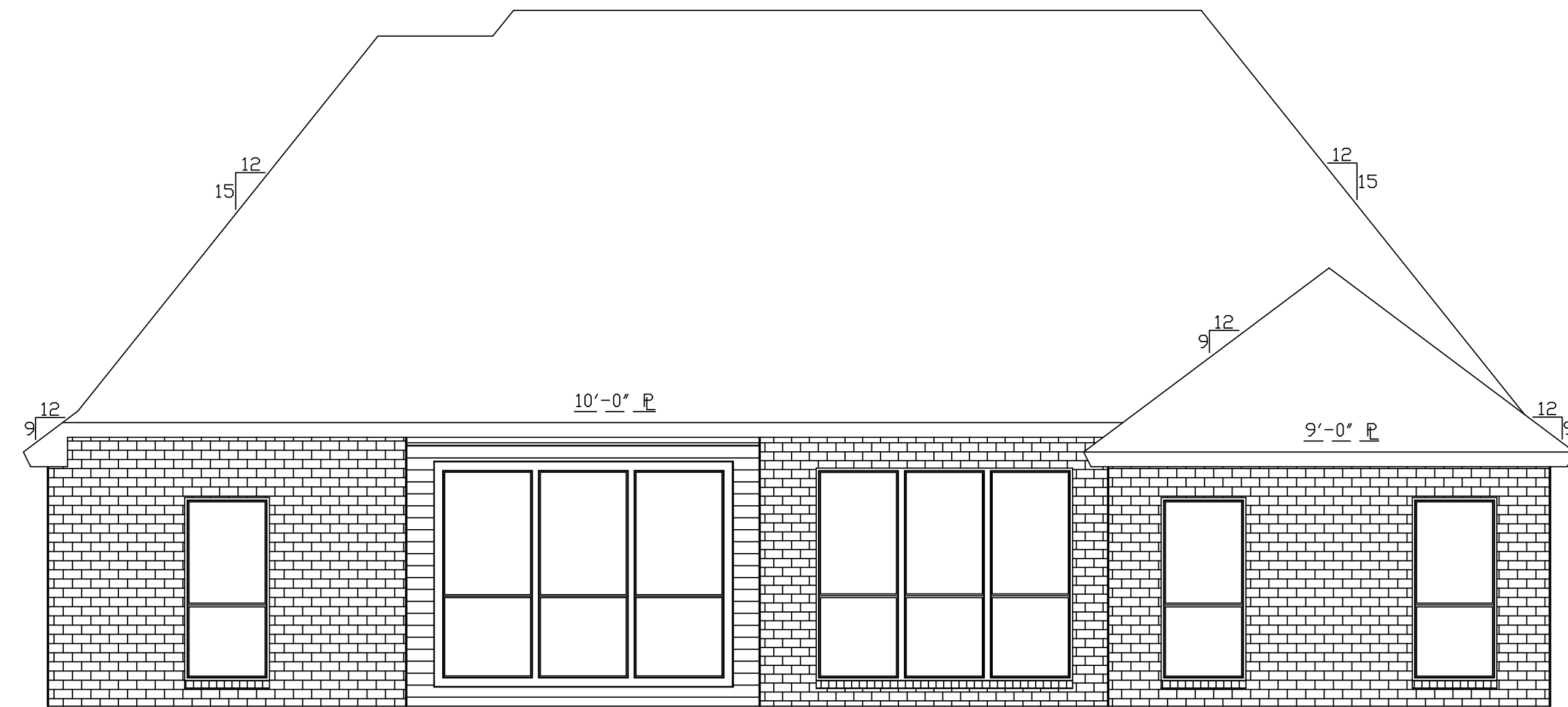


DO NOT REPRODUCE THIS PLAN  
Construction By:  
**CORBIN LADNER CUSTOM HOMES**  
Subdivision: Dutchtown Meadows  
Lot: 90  
City/Parish: Ascension  
THIS PLAN INTENDED FOR USE ON THE ABOVE LISTED LOT ONLY

SQUARE FOOTAGE	
LIVING AREA	1851
STOOP	33
REAR PORCH	156
GARAGE	536
STORAGE	72
TOTAL	2648



FRONT ELEVATION  
Scale: 1/4"=1'-0"



REAR ELEVATION  
Scale: 1/4"=1'-0"

GENERAL NOTES:

1. THIS HOME DESIGN IS THE PROPERTY OF HOME DESIGNS OF BATON ROUGE. ANY REUSE OR REPRODUCTION OF THIS PLAN IS PROHIBITED.
2. CONTRACTOR IS RESPONSIBLE FOR VERIFICATION OF ALL DIMENSIONS PRIOR TO CONSTRUCTION.
3. FIREPLACE SIZE AND DESIGN SHALL BE BY CONTRACTOR AT TIME OF CONSTRUCTION.
4. ALL ANGLED WALLS ARE AT 45 DEGREES UNLESS OTHERWISE NOTED.
5. SEE SHEET 2/5 FOR SIDE ELEVATIONS AND ROOF CUT PLAN.
6. SEE SHEET 3/5 FOR H.V.A.C. PLAN AND ELECTRICAL PLAN.
7. SEE SHEET 4/5 FOR FOUNDATION PLAN.
8. SEE SHEET 5/5 FOR TYPICAL CONSTRUCTION DETAILS.
9. SEE ATTACHMENTS FOR PLOT PLAN AND RES-CHECK.

SPECIAL NOTES:

1. HOME DESIGNS OF BATON ROUGE HAS MADE EVERY EFFORT TO INSURE THE ACCURACY OF THIS PLAN. HOWEVER, IT IS THE RESPONSIBILITY OF THE CONTRACTOR/OWNER TO VERIFY THE DIMENSIONAL CORRECTNESS, STRUCTURAL INTEGRITY AND CODE COMPLIANCE ASPECTS OF THIS PLAN PRIOR TO CONSTRUCTION. ANY LIABILITIES DUE TO ERRORS OR OMISSIONS ON THIS PLAN ARE TO BE ASSUMED BY THE CONTRACTOR/OWNER.
2. HOME DESIGNS OF BATON ROUGE HAS THOROUGHLY ENJOYED WORKING WITH YOU. WE SINCERELY APPRECIATE YOUR BUSINESS AND LOOK FORWARD TO WORKING WITH YOU AGAIN SOON.

ANOTHER DESIGN BY  
**HOME DESIGNS**  
**BATON ROUGE**  
 DAVID PARKER - OWNER  
 5711 GREENSHIRE AVE.  
 BATON ROUGE, LA 70817  
 (225) 751-9264  
 DWG#DRS-01  
 4/28/25  
 PAGE  
 1/5