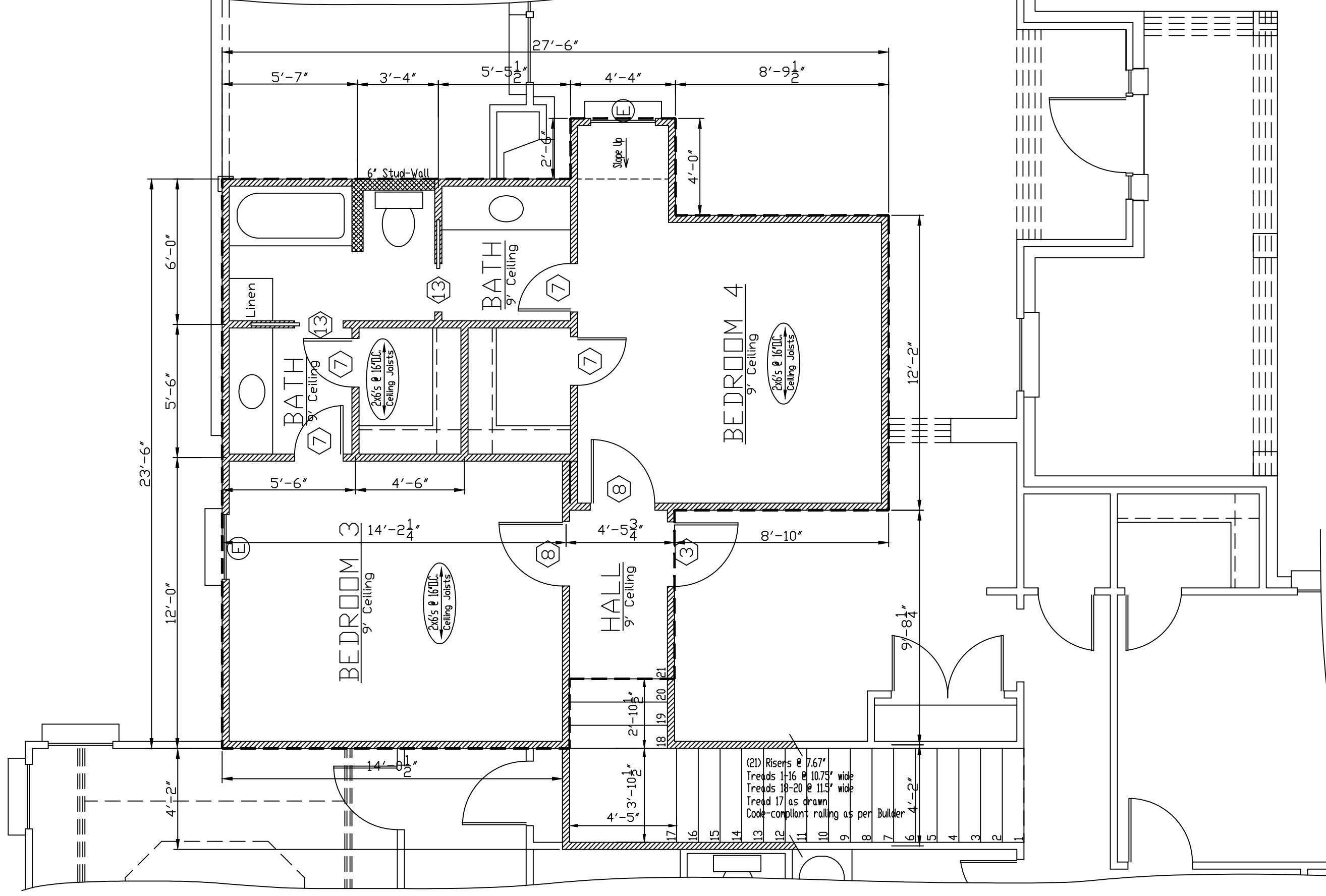


1st FLOOR PLAN
Scale: 1/4"=1'-0"

DOORS			WINDOWS			
MARK	SIZE	THK	MARK	SIZE	LTS	DESCRIPTION
(1)	3-2 x 8-0	1 3/4"	(A)	2-8 x 7-0	1/1	SINGLE HUNG, ALMOND, VINYL
(2)	2-8 x 8-0	1 3/4"	(B)	2-8 x 6-0	1/1	SINGLE HUNG, ALMOND, VINYL
(3)	2-8 x 6-8	1 3/4"	(C)	4-0 x 4-0	1	FIXED, ALMOND, VINYL, RAIN GLASS
(4)	3-0 x 6-8	1 3/4"	(D)	3-0 x 8-0	4/2	SINGLE HUNG, ALMOND, VINYL
(5)	18-0 x 8-0	Std.	(E)	2-8 x 5-0	1/1	SINGLE HUNG, ALMOND, VINYL
(6)	2-4 x 6-8	1 3/4"	(F)	2-8 x 6-0	4/2	SINGLE HUNG, ALMOND, VINYL
(7)	2-0 x 6-8	1 3/4"	(G)	3-0 x 6-0	4/2	SINGLE HUNG, ALMOND, VINYL
(8)	2-8 x 6-8	1 3/4"	(H)	2-4 x 7-0	1/1	SINGLE HUNG, ALMOND, VINYL
(9)	1-4 x 6-8	1 3/4"	(I)	3-0 x 8-0		DEAD BOARD SHUTTERS
(10)	3-0 x 8-0	Std.				
(11)	4-0 x 8-0	Std.				CASED OPENING
(12)	6-0 x 8-0	Std.				D.H. GARAGE DOOR, MANUAL
(13)	2-0 x 6-8	Std.				INT., H.C., POCKET DOOR, RAISED PANEL MASONITE

WINDOW NOTE:
1. ALL STREET-FACING WINDOWS MUST HAVE RAISED MULLION LIFE DIVIDERS.



2nd FLOOR PLAN
Scale: 1/4"=1'-0"

GENERAL NOTES:

- THIS HOME DESIGN IS THE PROPERTY OF HOME DESIGNS OF BATON ROUGE. ANY REUSE OR REPRODUCTION OF THIS PLAN IS PROHIBITED.
- CONTRACTOR IS RESPONSIBLE FOR VERIFICATION OF ALL DIMENSIONS PRIOR TO CONSTRUCTION.
- FIREPLACE SIZE AND DESIGN SHALL BE BY CONTRACTOR AT TIME OF CONSTRUCTION.
- ALL ANGLED WALLS ARE AT 45 DEGREES UNLESS OTHERWISE NOTED.
- SEE SHEET 2/7 FOR FRONT, REAR AND SIDE ELEVATIONS.
- SEE SHEET 3/7 FOR ELECTRICAL PLAN.
- SEE SHEET 4/7 FOR H.V.A.C. PLAN.
- SEE SHEET 5/7 FOR FOUNDATION JOIST PLAN AND ROOF CUT PLAN.
- SEE SHEET 6/7 FOR 1st FLOOR JOIST PLAN AND 2nd STORY SECTION PLAN.
- SEE SHEET 7/7 FOR TYPICAL CONSTRUCTION DETAILS.
- SEE ATTACHMENTS FOR PLOT PLAN AND RESCHECK.

SPECIAL NOTES:

- HOME DESIGNS OF BATON ROUGE HAS MADE EVERY EFFORT TO INSURE THE ACCURACY OF THIS PLAN. HOWEVER, CONTRACTOR SHALL VERIFY ALL DIMENSIONS AND CONDITIONS PRIOR TO CONSTRUCTION. HOME DESIGNS OF BATON ROUGE HAS THOROUGHLY ENJOYED WORKING WITH YOU. WE SINCERELY APPRECIATE YOUR BUSINESS AND LOOK FORWARD TO WORKING WITH YOU AGAIN SOON.