

CONSTRUCTION DRAWINGS
 Construction By
COBBIN LAMBER CUSTOM HOMES, LLC
 Lot# 146
 Holdings of Dutchtown
 Ascension Parish
 THIS PLAN INTENDED FOR USE ON THE LOT LISTED ABOVE ONLY

SQUARE FOOTAGE

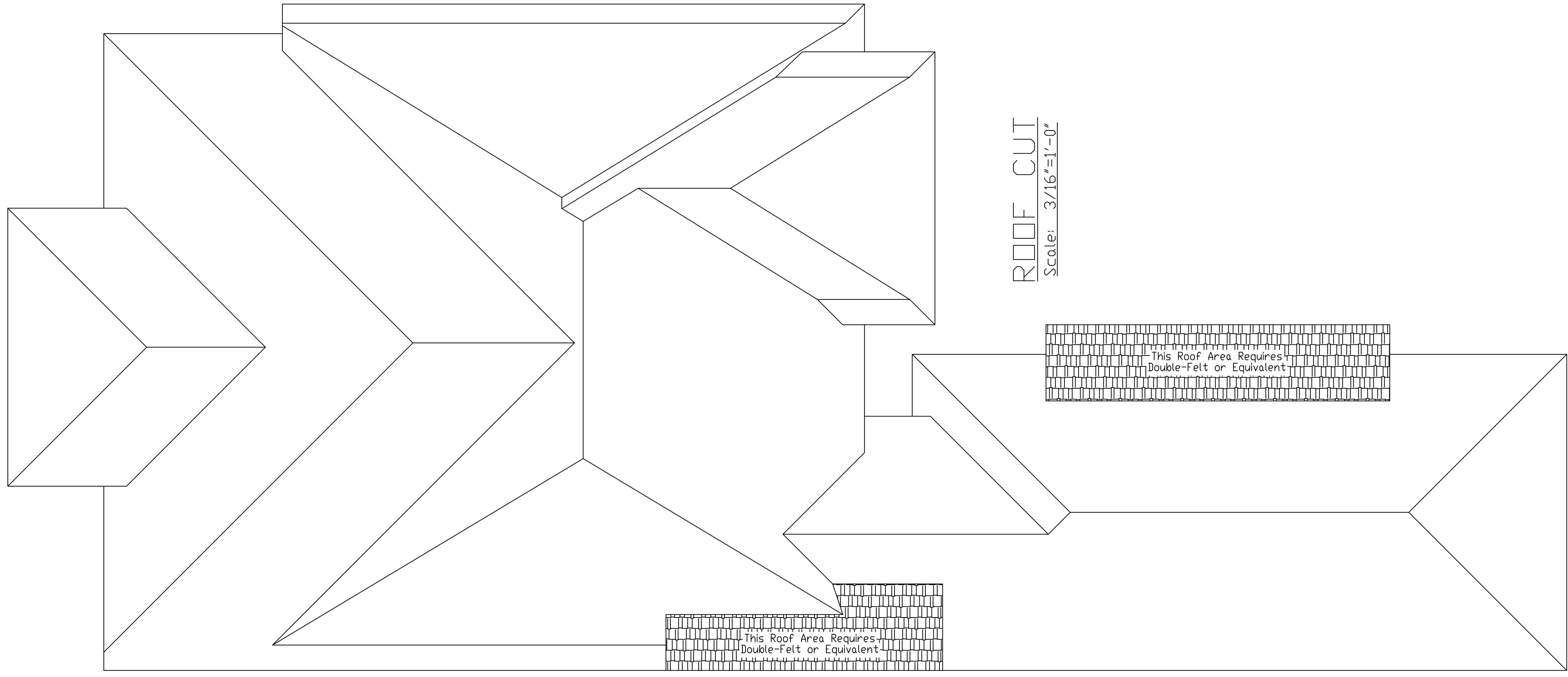
LIVING AREA	2495
FRONT PORCH	99
REAR PORCH	437
GARAGE	520
STORAGE	311
TOTAL	3862

FLOOR PLAN
 Scale: 1/4"=1'-0"

OPENING SCHEDULE

DOORS		WINDOWS	
MARK	DESCRIPTION	MARK	DESCRIPTION
(1)	3'-2" x 8'-0" 1 3/4" EXT. S.C. WOOD 5 PANEL W/ 2-LITE TRANSOM	(A)	2'-8" x 7'-0" 1/1" SINGLE HUNG, ALMOND, VINYL
(2)	2'-8" x 8'-0" 1 3/4" EXT., S.C. FIBERGLASS, FULL LITE	(B)	2'-8" x 6'-0" 1/1" SINGLE HUNG, ALMOND, VINYL
(3)	2'-8" x 6'-8" 1 3/4" EXT., S.C. MASONITE, RAISED PANEL	(C)	4'-0" x 4'-0" 1" FIXED, ALMOND, VINYL, RAIN GLASS
(4)	18'-0" x 8'-0" Std. DH. GARAGE DOOR, ELECTRIC	(D)	3'-0" x 6'-0" DEAD BOARD SHUTTERS
(5)	DELETED	(E)	3'-0" x 7'-0" 4/2" SINGLE HUNG, ALMOND, VINYL
(6)	2'-4" x 6'-8" 1 3/4" INT., H.C. RAISED PANEL MASONITE	(F)	3'-0" x 7'-0" DEAD BOARD SHUTTERS
(7)	2'-8" x 6'-8" 1 3/4" INT., H.C. RAISED PANEL MASONITE	(G)	2'-0" x 3'-0" 1/1" SINGLE HUNG, ALMOND, VINYL
(8)	2'-8" x 8'-0" Std. ARCHED CASED OPENING	(H)	3'-0" x 1'-0" 1" FIXED, ALMOND, VINYL, RAIN GLASS
(9)	2'-4" x 8'-0" 1 3/4" INT. H.C. RAISED PANEL MASONITE	(I)	2'-8" x 1'-0" 1" FIXED, ALMOND, VINYL
(10)	9'-0" x 8'-0" Std. DH. GARAGE DOOR, ELECTRIC		
(11)	2'-0" x 6'-8" 1 3/4" INT., H.C. RAISED PANEL MASONITE		
(12)	2'-8" x 8'-0" 1 3/4" INT., H.C. RAISED PANEL MASONITE		

WINDOW NOTE:
 1. ALL STORM-RATING WINDOWS MUST HAVE WINDON LITE INTERIOR.



ROOF CUT
 Scale: 3/16"=1'-0"

GENERAL NOTES:

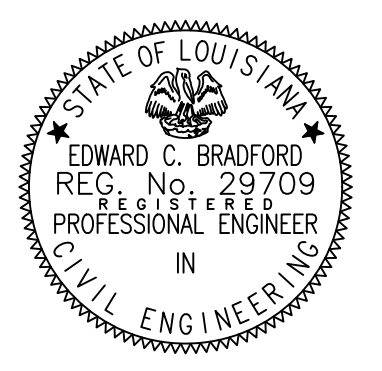
1. THIS HOME DESIGN IS THE PROPERTY OF HOME DESIGNS OF BATON ROUGE. ANY REUSE OR REPRODUCTION OF THIS PLAN IS PROHIBITED.
2. CONTRACTOR IS RESPONSIBLE FOR VERIFICATION OF ALL DIMENSIONS PRIOR TO CONSTRUCTION.
3. FIREPLACE SIZE AND DESIGN SHALL BE BY CONTRACTOR AT TIME OF CONSTRUCTION.
4. ALL ANGLED WALLS ARE AT 45 DEGREES UNLESS OTHERWISE NOTED.
5. SEE TOP SHEET FOR PLOT PLAN.
6. SEE SHEET 1 FOR FLOOR PLAN, ROOF CUT PLAN AND PLAN NOTES.
7. SEE SHEET 2 FOR FRONT, REAR AND SIDE ELEVATIONS.
8. SEE SHEET 3 ELECTRICAL AND H.V.A.C. PLANS.
9. SEE SHEET 4 FOR PLUMBING/SEWER PLAN.
10. SEE SHEET 5 FOR FOUNDATION PLAN.
11. SEE SHEET 6 FOR BRACED WALL PLAN.
12. SEE BOTTOM SHEET FOR TYPICAL CONSTRUCTION DETAILS.

SPECIAL NOTES:

1. HOME DESIGNS OF BATON ROUGE HAS MADE EVERY EFFORT TO INSURE THE ACCURACY OF THIS PLAN. HOWEVER, IT IS THE RESPONSIBILITY OF THE CONTRACTOR/OWNER TO VERIFY THE DIMENSIONAL CORRECTNESS, STRUCTURAL INTEGRITY AND CODE COMPLIANCE ASPECTS OF THIS PLAN PRIOR TO CONSTRUCTION. ANY LIABILITIES DUE TO ERRORS OR OMISSIONS ON THIS PLAN ARE TO BE ASSUMED BY THE CONTRACTOR/OWNER.
2. HOME DESIGNS OF BATON ROUGE HAS THOROUGHLY ENJOYED WORKING WITH YOU. WE SINCERELY APPRECIATE YOUR BUSINESS AND LOOK FORWARD TO WORKING WITH YOU AGAIN SOON.

CONSTRUCTION NOTES:

1. SEE DETAIL SHEET AND BRACED WALL PLAN FOR APPROVED, STAMPED CONSTRUCTION DETAILS FOR THIS PLAN.
2. GARAGE-SWELLING WALL SEPARATION MUST MEET MATERIAL REQUIREMENTS AS PER IRC2015 TABLE 202.6.5 : SWELLING-GARAGE SEPARATION.
3. BUILDER TO PROVIDE SEPARATE ATTACHMENTS FOR ENGINEERED LUMBER DESIGN SPECIFICATIONS IF REQUESTED BY THE ASCENSION PARISH PERMIT OFFICE.



ANOTHER DESIGN BY
HOME DESIGNS
 OF
BATON ROUGE
 EDWARD C. BRADFORD
 REG. NO. 29709
 PROFESSIONAL ENGINEER
 IN
 LA 70810
 19113 N. FRONT JONES DR.
 BATON ROUGE, LA 70814
 (225) 232-2057
 822 201 0000
 Sheet
 1