

1st FLOOR PLAN
Scale: 1/8"=1'-0"

- CEILING JOIST NOTES:**
1. CEILING JOIST CUT-OUTS ARE BASED UPON THE SOUTHERN YELLOW PINE AS PER IRC2015 TABLE PREC4(2) AND 20 PSF FOR UNINHABITABLE ATTICS WITH LIMITED STORAGE.
 2. MAXIMUM SPANS AS FOLLOWS:
 a. 2x6 @ 16" O.C. - 12'-0" max. span
 b. 2x8 @ 16" O.C. - 15'-0" max. span
 c. 2x10 @ 16" O.C. - 18'-0" max. span
 d. 2x12 @ 16" O.C. - 21'-0" max. span
 e. 2x12 @ 12" O.C. - 24'-0" max. span
 3. CEILING JOISTS SHALL NOT BE USED TO SUPPORT ROOF/ATC BRACING.

- CONSTRUCTION NOTES:**
1. GABLE-ENDING WALL SEPARATION MUST MEET MATERIAL REQUIREMENTS AS PER IRC2015 TABLE PREC4(2) - IMPELLING-GARAGE SEPARATION.
 2. CONTRACTOR IS RESPONSIBLE FOR SETTING SUMP REMEDIATION.

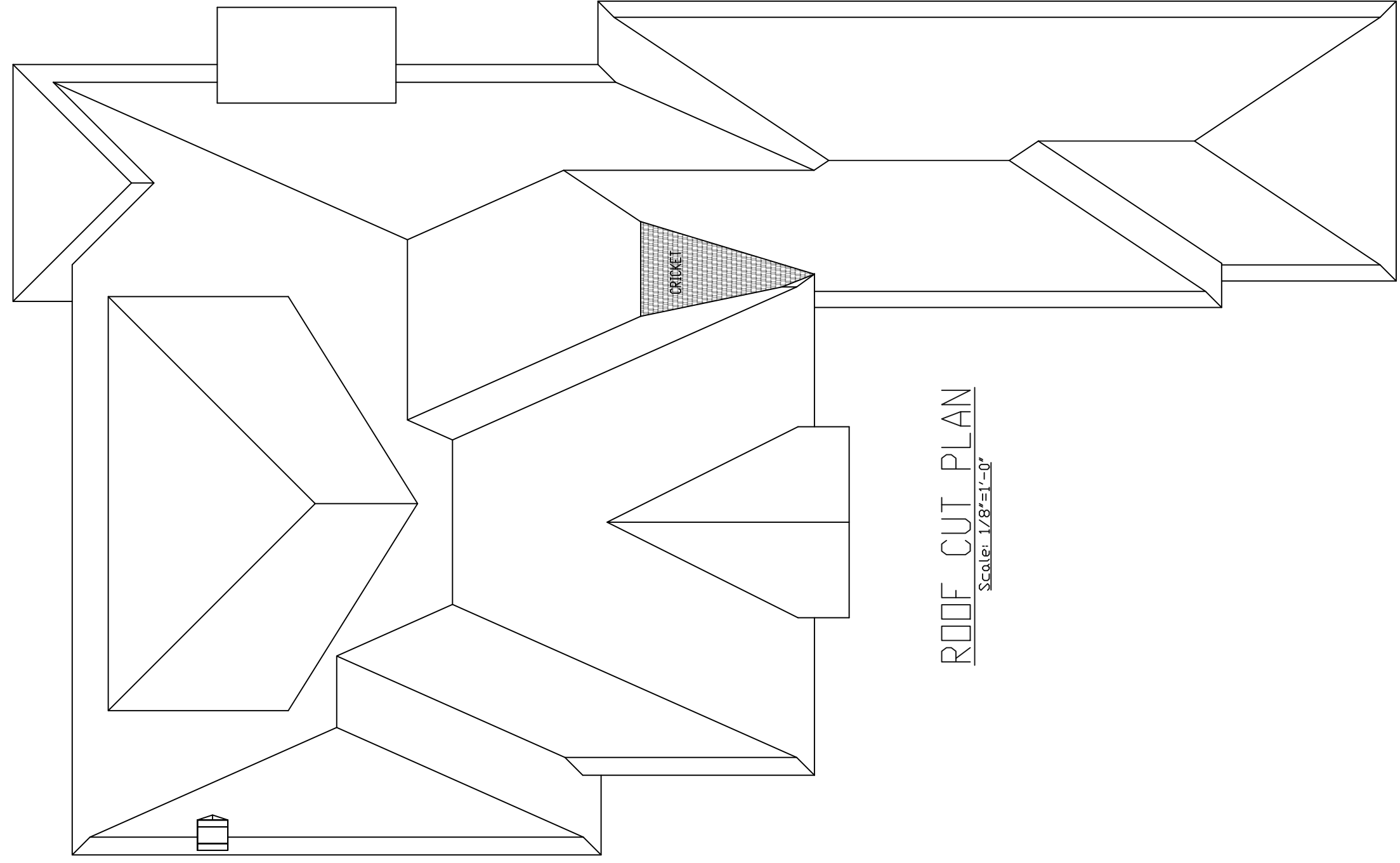
SPECIAL NOTE:
 1. HOME BUSINESS OR OFFICE USE IS ALLOWED PROVIDED TO MAINTAIN THE ACTIVITY OF THIS PLAN. HOWEVER, THE CONTRACTOR SHALL BE RESPONSIBLE FOR OBTAINING ALL NECESSARY PERMITS AND REGULATORY AGENCIES APPROVAL PRIOR TO CONSTRUCTION. ANY VIOLATIONS OF THIS PLAN ARE TO BE CORRECTED AT THE CONTRACTOR'S RISK.

OPENING SCHEDULE	
DOORS	
MARK	SIZE / THK / DESCRIPTION
1	3'-2" x 8'-4" 1 1/2" INT. ST. FIBERGLASS FULL GLASS (TYPE W) TRIPTOP
2	3'-0" x 8'-0" 1 1/2" INT. ST. FIBERGLASS FULL GLASS (TYPE W) TRIPTOP
3	5'-8" x 8'-0" 1 1/2" INT. ST. FIBERGLASS FULL GLASS (TYPE W) TRIPTOP
4	5'-0" x 8'-0" 1 1/2" INT. ST. FIBERGLASS FULL GLASS (TYPE W) TRIPTOP
5	3'-0" x 8'-0" 1 1/2" INT. ST. FIBERGLASS FULL GLASS (TYPE W) TRIPTOP
6	10'-0" x 8'-0" 1 1/2" INT. ST. FIBERGLASS FULL GLASS (TYPE W) TRIPTOP
7	2'-0" x 8'-0" 1 1/2" INT. H.C. - RAISED PANEL MASONITE
8	2'-4" x 8'-0" 1 1/2" INT. H.C. - RAISED PANEL MASONITE
9	2'-8" x 8'-0" 1 1/2" INT. H.C. - RAISED PANEL MASONITE
10	3'-0" x 8'-0" 1 1/2" INT. H.C. - RAISED PANEL MASONITE
11	2'-8" x 8'-0" 1 1/2" INT. H.C. - RAISED PANEL MASONITE
12	3'-0" x 8'-0" 1 1/2" INT. H.C. - RAISED PANEL MASONITE

WINDOWS	
MARK	SIZE / LTS / DESCRIPTION
1	2'-8" x 7'-0" 4/4 SINGLE HUNG, WHITE, VINYL
2	2'-8" x 1'-6" 2 FIXED, WHITE, VINYL
3	3'-0" x 6'-0" 1/1 SINGLE HUNG, WHITE, VINYL
4	5'-0" x 7'-0" FIXED LEAD BOARD SHUTTERS
5	3'-0" x 7'-0" 1/1 SINGLE HUNG, WHITE, VINYL
6	3'-0" x 1'-6" 1 FIXED, WHITE, VINYL
7	2'-4" x 4'-0" 1/1 SINGLE HUNG, WHITE, VINYL
8	2'-4" x 1'-6" 1/1 SINGLE HUNG, WHITE, VINYL
9	2'-8" x 7'-0" 1/1 SINGLE HUNG, WHITE, VINYL
10	2'-0" x 4'-0" 1/1 SINGLE HUNG, WHITE, VINYL

WINDOW AND DOOR NOTES:
 All windows shall be installed with weatherstripping and caulking. The door and/or driveway shall utilize raised rubber tile entries. THE DOOR & WINDOW PROFILES SHALL IDENTIFY ALL MOSES & WINDOWS REQUIRING THERMO BREAK GLASS AS PER 2015 IBC, CODE.

- GENERAL NOTES:**
1. REUSE OR REPRODUCTION OF THIS PLAN IS PROHIBITED.
 2. CONTRACTOR SHALL VERIFY ALL DIMENSIONS PRIOR TO CONSTRUCTION.
 3. ALL ANGLED WALLS ARE AT 45 DEGREES UNLESS OTHERWISE NOTED.
 4. SEE SHEET 0 (TOP SHEET) FOR PLOT PLAN.
 5. SEE SHEET 1 FOR 1st FLOOR PLAN, ROOF CUT PLAN, OPENING SCHEDULE AND NOTES.
 6. SEE SHEET 2 FOR 2nd FLOOR PLAN AND 2nd STORY FLOOR JOIST PLAN.
 7. SEE SHEET 2.1 FOR FRONT PORCH SECTION AND 2-STORY SECTION.
 8. SEE SHEET 3 FOR FRONT, REAR AND SIDE ELEVATIONS.
 9. SEE SHEET 4 ELECTRICAL PLAN.
 10. SEE SHEET 5 FOR H.V.A.C. PLAN.
 11. SEE SHEET 6 FOR PLUMBING / SEWER PLAN.
 12. SEE SHEET 7 TYPICAL CONSTRUCTION DETAILS.
 13. SEE ATTACHMENTS FOR POST-TENSION FOUNDATION PLAN AND SHEARWALL PLAN BY SE ENGINEERS.
 14. ENGINEERED BRAM DESIGN DOCUMENTATION WILL BE PROVIDED BY BUILDER UPON REQUEST.
 15. SEE ATTACHMENTS FOR RES-CHECK DOCUMENTATION.
 16. FOR SCALED DRAWINGS, THIS SET OF ARCHITECTURAL PLANS MUST BE PRINTED ON E1 SIZE PAPER - 30" x 42".



ROOF CUT PLAN
Scale: 1/8"=1'-0"

Construction By:
CORBIN LADNER CUSTOM HOMES
 Subdivision: THE SANCTUARY
 Lot: 83
 City/Parish: East Baton Rouge

SQUARE FOOTAGE	
1st FLOOR LIVING	2660
2nd FLOOR LIVING	665
TOTAL LIVING	3325
NON-LIVING	2263
TOTAL	5588

ARCHITECTURAL DESIGN BY
BAYON ROUGE DESIGN LLC
 14115 N. PARKWAY, SUITE 200
 BAYON ROUGE, LA 70020
 (504) 255-2424
 WWW.BAYONROUGEDSIGN.COM
 SHEET 1