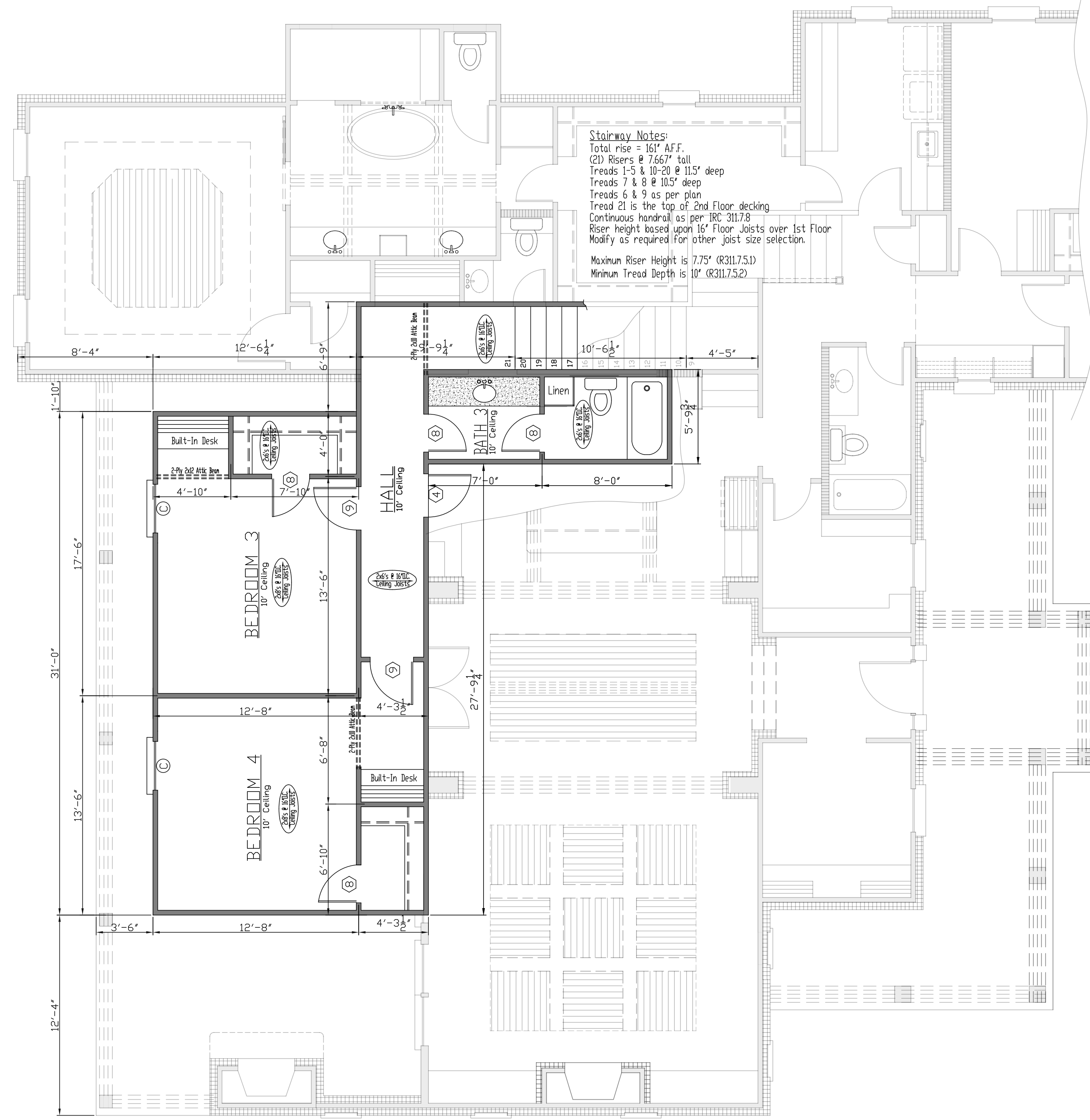


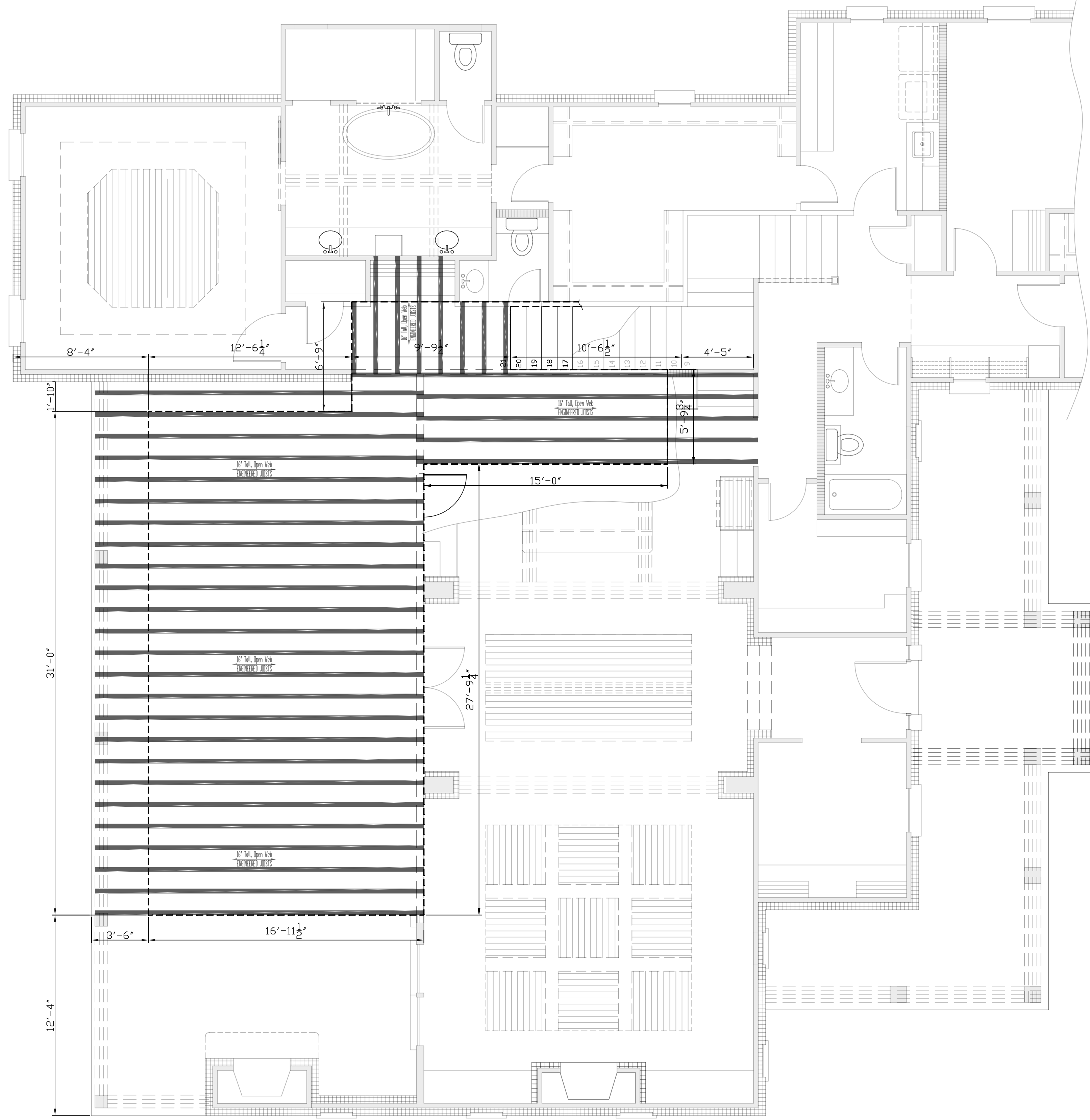
| OPENING SCHEDULE |               |   |
|------------------|---------------|---|
| DOORS            |               |   |
| MARK             | SIZE          | THK DESCRIPTION   |
| (1)              | 2-2 x 8-4 1/2 | WOODS LITE DOOR WITH TRANSOM OR LITE OR FULL GLASS UNFINISHED |
| (2)              | 2-6 x 8-0 1/2 | INT. ST. FIREGLASS FULL GLASS LITE W/ TRANSOM                 |
| (3)              | 2-8 x 8-0 1/2 | INT. ST. FIREGLASS FULL GLASS LITE                            |
| (4)              | 2-8 x 8-0 1/2 | INT. ST. FIREGLASS FULL GLASS LITE                            |
| (5)              | 2-8 x 8-0 1/2 | INT. ST. FIREGLASS FULL GLASS LITE                            |
| (6)              | 2-8 x 8-0 1/2 | INT. ST. FIREGLASS FULL GLASS LITE                            |
| (7)              | 2-8 x 8-0 1/2 | INT. ST. FIREGLASS FULL GLASS LITE                            |
| (8)              | 2-8 x 8-0 1/2 | INT. ST. FIREGLASS FULL GLASS LITE                            |
| (9)              | 2-8 x 8-0 1/2 | INT. ST. FIREGLASS FULL GLASS LITE                            |
| (10)             | 2-8 x 8-0 1/2 | INT. ST. FIREGLASS FULL GLASS LITE                            |
| (11)             | 2-8 x 8-0 1/2 | INT. ST. FIREGLASS FULL GLASS LITE                            |
| (12)             | 2-8 x 8-0 1/2 | INT. ST. FIREGLASS FULL GLASS LITE                            |
| (13)             | 2-8 x 8-0 1/2 | INT. ST. FIREGLASS FULL GLASS LITE                            |
| (14)             | 2-8 x 8-0 1/2 | INT. ST. FIREGLASS FULL GLASS LITE                            |
| (15)             | 2-8 x 8-0 1/2 | INT. ST. FIREGLASS FULL GLASS LITE                            |
| (16)             | 2-8 x 8-0 1/2 | INT. ST. FIREGLASS FULL GLASS LITE                            |
| (17)             | 2-8 x 8-0 1/2 | INT. ST. FIREGLASS FULL GLASS LITE                            |
| (18)             | 2-8 x 8-0 1/2 | INT. ST. FIREGLASS FULL GLASS LITE                            |
| (19)             | 2-8 x 8-0 1/2 | INT. ST. FIREGLASS FULL GLASS LITE                            |
| (20)             | 2-8 x 8-0 1/2 | INT. ST. FIREGLASS FULL GLASS LITE                            |
| (21)             | 2-8 x 8-0 1/2 | INT. ST. FIREGLASS FULL GLASS LITE                            |
| (22)             | 2-8 x 8-0 1/2 | INT. ST. FIREGLASS FULL GLASS LITE                            |
| (23)             | 2-8 x 8-0 1/2 | INT. ST. FIREGLASS FULL GLASS LITE                            |
| (24)             | 2-8 x 8-0 1/2 | INT. ST. FIREGLASS FULL GLASS LITE                            |
| (25)             | 2-8 x 8-0 1/2 | INT. ST. FIREGLASS FULL GLASS LITE                            |
| (26)             | 2-8 x 8-0 1/2 | INT. ST. FIREGLASS FULL GLASS LITE                            |
| (27)             | 2-8 x 8-0 1/2 | INT. ST. FIREGLASS FULL GLASS LITE                            |
| (28)             | 2-8 x 8-0 1/2 | INT. ST. FIREGLASS FULL GLASS LITE                            |
| (29)             | 2-8 x 8-0 1/2 | INT. ST. FIREGLASS FULL GLASS LITE                            |
| (30)             | 2-8 x 8-0 1/2 | INT. ST. FIREGLASS FULL GLASS LITE                            |
| (31)             | 2-8 x 8-0 1/2 | INT. ST. FIREGLASS FULL GLASS LITE                            |
| (32)             | 2-8 x 8-0 1/2 | INT. ST. FIREGLASS FULL GLASS LITE                            |
| (33)             | 2-8 x 8-0 1/2 | INT. ST. FIREGLASS FULL GLASS LITE                            |
| (34)             | 2-8 x 8-0 1/2 | INT. ST. FIREGLASS FULL GLASS LITE                            |
| (35)             | 2-8 x 8-0 1/2 | INT. ST. FIREGLASS FULL GLASS LITE                            |
| (36)             | 2-8 x 8-0 1/2 | INT. ST. FIREGLASS FULL GLASS LITE                            |
| (37)             | 2-8 x 8-0 1/2 | INT. ST. FIREGLASS FULL GLASS LITE                            |
| (38)             | 2-8 x 8-0 1/2 | INT. ST. FIREGLASS FULL GLASS LITE                            |
| (39)             | 2-8 x 8-0 1/2 | INT. ST. FIREGLASS FULL GLASS LITE                            |
| (40)             | 2-8 x 8-0 1/2 | INT. ST. FIREGLASS FULL GLASS LITE                            |
| (41)             | 2-8 x 8-0 1/2 | INT. ST. FIREGLASS FULL GLASS LITE                            |
| (42)             | 2-8 x 8-0 1/2 | INT. ST. FIREGLASS FULL GLASS LITE                            |
| (43)             | 2-8 x 8-0 1/2 | INT. ST. FIREGLASS FULL GLASS LITE                            |
| (44)             | 2-8 x 8-0 1/2 | INT. ST. FIREGLASS FULL GLASS LITE                            |
| (45)             | 2-8 x 8-0 1/2 | INT. ST. FIREGLASS FULL GLASS LITE                            |
| (46)             | 2-8 x 8-0 1/2 | INT. ST. FIREGLASS FULL GLASS LITE                            |
| (47)             | 2-8 x 8-0 1/2 | INT. ST. FIREGLASS FULL GLASS LITE                            |
| (48)             | 2-8 x 8-0 1/2 | INT. ST. FIREGLASS FULL GLASS LITE                            |
| (49)             | 2-8 x 8-0 1/2 | INT. ST. FIREGLASS FULL GLASS LITE                            |
| (50)             | 2-8 x 8-0 1/2 | INT. ST. FIREGLASS FULL GLASS LITE                            |
| (51)             | 2-8 x 8-0 1/2 | INT. ST. FIREGLASS FULL GLASS LITE                            |
| (52)             | 2-8 x 8-0 1/2 | INT. ST. FIREGLASS FULL GLASS LITE                            |
| (53)             | 2-8 x 8-0 1/2 | INT. ST. FIREGLASS FULL GLASS LITE                            |
| (54)             | 2-8 x 8-0 1/2 | INT. ST. FIREGLASS FULL GLASS LITE                            |
| (55)             | 2-8 x 8-0 1/2 | INT. ST. FIREGLASS FULL GLASS LITE                            |
| (56)             | 2-8 x 8-0 1/2 | INT. ST. FIREGLASS FULL GLASS LITE                            |
| (57)             | 2-8 x 8-0 1/2 | INT. ST. FIREGLASS FULL GLASS LITE                            |
| (58)             | 2-8 x 8-0 1/2 | INT. ST. FIREGLASS FULL GLASS LITE                            |
| (59)             | 2-8 x 8-0 1/2 | INT. ST. FIREGLASS FULL GLASS LITE                            |
| (60)             | 2-8 x 8-0 1/2 | INT. ST. FIREGLASS FULL GLASS LITE                            |
| (61)             | 2-8 x 8-0 1/2 | INT. ST. FIREGLASS FULL GLASS LITE                            |
| (62)             | 2-8 x 8-0 1/2 | INT. ST. FIREGLASS FULL GLASS LITE                            |
| (63)             | 2-8 x 8-0 1/2 | INT. ST. FIREGLASS FULL GLASS LITE                            |
| (64)             | 2-8 x 8-0 1/2 | INT. ST. FIREGLASS FULL GLASS LITE                            |
| (65)             | 2-8 x 8-0 1/2 | INT. ST. FIREGLASS FULL GLASS LITE                            |
| (66)             | 2-8 x 8-0 1/2 | INT. ST. FIREGLASS FULL GLASS LITE                            |
| (67)             | 2-8 x 8-0 1/2 | INT. ST. FIREGLASS FULL GLASS LITE                            |
| (68)             | 2-8 x 8-0 1/2 | INT. ST. FIREGLASS FULL GLASS LITE                            |
| (69)             | 2-8 x 8-0 1/2 | INT. ST. FIREGLASS FULL GLASS LITE                            |
| (70)             | 2-8 x 8-0 1/2 | INT. ST. FIREGLASS FULL GLASS LITE                            |
| (71)             | 2-8 x 8-0 1/2 | INT. ST. FIREGLASS FULL GLASS LITE                            |
| (72)             | 2-8 x 8-0 1/2 | INT. ST. FIREGLASS FULL GLASS LITE                            |
| (73)             | 2-8 x 8-0 1/2 | INT. ST. FIREGLASS FULL GLASS LITE                            |
| (74)             | 2-8 x 8-0 1/2 | INT. ST. FIREGLASS FULL GLASS LITE                            |
| (75)             | 2-8 x 8-0 1/2 | INT. ST. FIREGLASS FULL GLASS LITE                            |
| (76)             | 2-8 x 8-0 1/2 | INT. ST. FIREGLASS FULL GLASS LITE                            |
| (77)             | 2-8 x 8-0 1/2 | INT. ST. FIREGLASS FULL GLASS LITE                            |
| (78)             | 2-8 x 8-0 1/2 | INT. ST. FIREGLASS FULL GLASS LITE                            |
| (79)             | 2-8 x 8-0 1/2 | INT. ST. FIREGLASS FULL GLASS LITE                            |
| (80)             | 2-8 x 8-0 1/2 | INT. ST. FIREGLASS FULL GLASS LITE                            |
| (81)             | 2-8 x 8-0 1/2 | INT. ST. FIREGLASS FULL GLASS LITE                            |
| (82)             | 2-8 x 8-0 1/2 | INT. ST. FIREGLASS FULL GLASS LITE                            |
| (83)             | 2-8 x 8-0 1/2 | INT. ST. FIREGLASS FULL GLASS LITE                            |
| (84)             | 2-8 x 8-0 1/2 | INT. ST. FIREGLASS FULL GLASS LITE                            |
| (85)             | 2-8 x 8-0 1/2 | INT. ST. FIREGLASS FULL GLASS LITE                            |
| (86)             | 2-8 x 8-0 1/2 | INT. ST. FIREGLASS FULL GLASS LITE                            |
| (87)             | 2-8 x 8-0 1/2 | INT. ST. FIREGLASS FULL GLASS LITE                            |
| (88)             | 2-8 x 8-0 1/2 | INT. ST. FIREGLASS FULL GLASS LITE                            |
| (89)             | 2-8 x 8-0 1/2 | INT. ST. FIREGLASS FULL GLASS LITE                            |
| (90)             | 2-8 x 8-0 1/2 | INT. ST. FIREGLASS FULL GLASS LITE                            |
| (91)             | 2-8 x 8-0 1/2 | INT. ST. FIREGLASS FULL GLASS LITE                            |
| (92)             | 2-8 x 8-0 1/2 | INT. ST. FIREGLASS FULL GLASS LITE                            |
| (93)             | 2-8 x 8-0 1/2 | INT. ST. FIREGLASS FULL GLASS LITE                            |
| (94)             | 2-8 x 8-0 1/2 | INT. ST. FIREGLASS FULL GLASS LITE                            |
| (95)             | 2-8 x 8-0 1/2 | INT. ST. FIREGLASS FULL GLASS LITE                            |
| (96)             | 2-8 x 8-0 1/2 | INT. ST. FIREGLASS FULL GLASS LITE                            |
| (97)             | 2-8 x 8-0 1/2 | INT. ST. FIREGLASS FULL GLASS LITE                            |
| (98)             | 2-8 x 8-0 1/2 | INT. ST. FIREGLASS FULL GLASS LITE                            |
| (99)             | 2-8 x 8-0 1/2 | INT. ST. FIREGLASS FULL GLASS LITE                            |
| (100)            | 2-8 x 8-0 1/2 | INT. ST. FIREGLASS FULL GLASS LITE                            |

ALL WINDOWS, ALUMINUM OR STEEL, SHALL BE FINISHED AND PAINTED TO MATCH THE EXISTING FINISH.  
 ALL WINDOWS AND DOORS SHALL BE FINISHED AND PAINTED TO MATCH THE EXISTING FINISH.  
 THE DOOR & WINDOW THRESHOLDS SHALL BE FINISHED TO MATCH THE EXISTING FINISH.



**Stairway Notes:**  
 Total rise = 16' AFF.  
 (2) Risers @ 7.567' tall  
 Treads 1-5 @ 10'-20" @ 11.5' deep  
 Treads 7 & 8 @ 10.5' deep  
 Treads 6 & 9 as per plan  
 Tread 21 is the top of 2nd Floor decking  
 Continuous handrail as per IRC 311.7.6  
 Riser height based upon 16' Floor Joists over 1st Floor  
 Modify as required for other Joist size selection.  
 Maximum Riser Height is 7.75' (R311.7.5.1)  
 Minimum Tread Depth is 10' (R311.7.5.2)

2nd FLOOR PLAN  
 Scale: 1/4"=1'-0"



2nd STORY FLOOR JOIST PLAN  
 Scale: 1/4"=1'-0"

16" Tall Joists @ 16" O.C. Shown for Plan Purposes  
 Final 1st Ceiling / 2nd Floor Joist design shall be as per Engineered Joist Provider

The Engineered Joist Provider shall dictate final solution for 2nd Story Floor-Joist size, type, orientation and spacing.